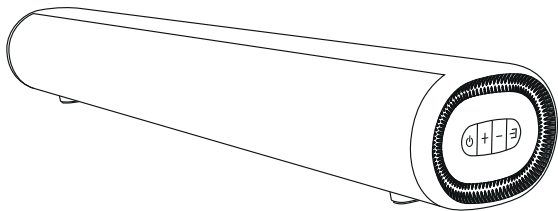


**littoak**

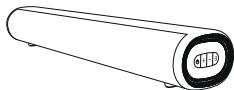
## Quick Start

(SE04)



If you have any questions after reading all of this instruction, pls feel free to  
contact [service@littoak.com](mailto:service@littoak.com)

## Box Contents



Sound Bar



Remote Control



Quick Start



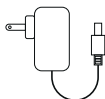
Mount Screw



Digital Optical cable



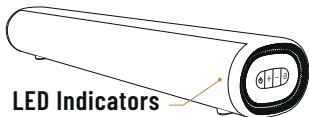
3.5mm to 3.5mm  
audio cable



Power Adapter

If missing any accessories, pls contact [service@littoak.com](mailto:service@littoak.com)

## LED Indicators



LED Indicators



Standby



Bluetooth



ARC



Optical



Coaxial



AUX



USB



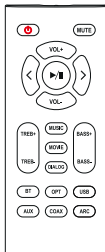
## Front

- 1 Press to turn on/change the audio source; Press and hold it to turn off.
- 2 Press to previous/next track; Press and hold it to decrease/increase the loudness of audio.
- 3 Select the source input mode(Bluetooth ->Optical -> ARC -> Coaxial -> AUX -> USB); Press and hold to reset treble and bass to factory settings.

## Back

- |       |        |           |
|-------|--------|-----------|
| 4 ARC | 5 Coax | 6 Optical |
| 7 AUX | 8 USB  | 9 DC      |

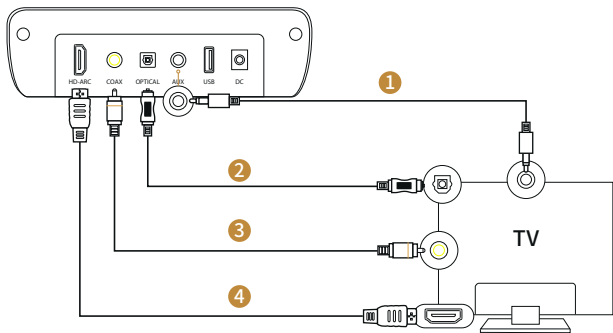
## Remote



	Power button		Mute/Unmute
	Volume up		Volume down
	Previous track		Next track
	Play/pause		Increase or decrease treble
	Increase or decrease bass		Music mode
	Movie mode		Dialogue mode
	Bluetooth mode		Optical mode
	USB mode		AUX mode
	Coaxial mode		ARC mode

## Connecting with a TV

### Back of Sound Bar



**Method ①** : Connecting using a 3.5mm to 3.5mm audio cable.

Select AUX mode on Soundbar. ( LED:💡 )

**Method ② ③** : Connecting using an Optical/Coaxial cable.

Select Optical/Coaxial mode on Soundbar. (LED:💡 / 💡 )

Set the TV's audio output to "PCM".

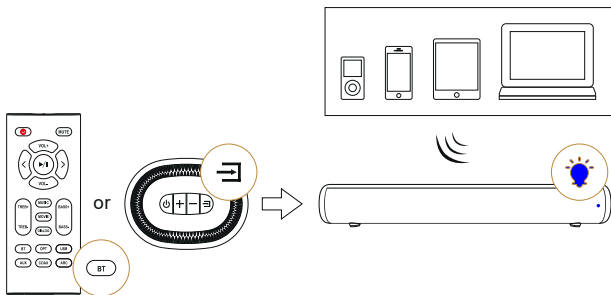
**Method ④** : Connecting using an High speed ARC cable. Select ARC mode on SE04.


Select ARC mode on SE04. (LED:💡 )

Set the TV's audio output to "PCM".

(Note: Pls remember to remove the plastic cover on the end of optical cable, then plug it at the right angle)

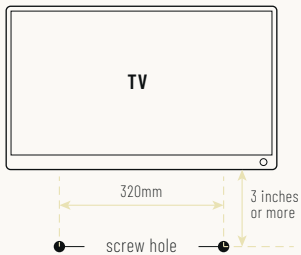
## Connecting a Bluetooth Device



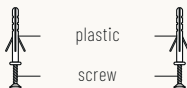
- Press the **"BT"** button on the remote or press the **"**" button on the right side of Sound Bar, the LED indicator blinks blue.
- Turn on Bluetooth on the Bluetooth device.
- Select **"SE04"** and connect it. When your Bluetooth device is connected, the LED indicator blinks blue slowly.
- Play music files from the device, connected via Bluetooth, through the Sound Bar.

(Note: Bluetooth signal up to 30 feet)

## Installing the Wall Mount



1. Use a tool to drill 2 holes in the wall, make sure the size as shown in the picture.



2. Put the plastic into the hole and screw in the screw, as shown in the picture.



3. Finally fix the Sound Bar on the wall.

## Setting "PCM" on your TV

**When all cables are connected properly, and LED indicator lights properly, if there is no sound from tv or Sound Bar, please setting your tv as below:**

1. Press "Menu" on the TV's remote control.
2. Press the arrow keys on the remote to scroll to "Audio Settings."
3. Press "OK" on the remote control.
4. Scroll to "Advanced Audio" and press "OK". Some televisions may not have an "Advanced Audio" menu and may list various audio settings instead.
5. Scroll to "Audio Output Mode" or "Digital Audio Output Mode" and press "OK".
6. Scroll until "PCM" is displayed as the current audio output.
7. Press "OK" to save the settings.

## Troubleshooting

**If you have a problem with your Sound Bar, there is quick simple solution, first make sure:**

- The cables between Sound Bar and input devices are securely connected, the power adapter is also connected to a working power source.
- The adapter LED indicator is lighting, and the LED indicator is lighting in the middle of Sound bar.



## No sound or crackling noise

- Check if all cables are connected properly.
- Press Mute on the remote to ensure the Sound Bar is not muted.
- Press Volume+ on the remote or the right side of your Sound Bar.
- Make sure you have selected the right input source on your remote, and the LED is lighting accordingly.
- If using Bluetooth, check if the sound on your device is under minimum volume.
- If using Optical, check if your device (TV/Cable Box/Projector/etc.) audio output set to PCM or turn the Dolby/dts off.
- When using cable connection, make sure your device has audio output port (not input).

## Remote isn't working

- Check if you have removed the plastic sheet on the bottom of remote.
- Check if the battery is installed properly with power.
- Check if the signal of the receiver is covered by something.
- Contact your retailer for assistance.

## I hear buzzing or humming

- Ensure all cables and wires are securely connected.
- Connect a different source device (TV, Blu-ray player, etc) to see if the buzzing persists. If it does not, the problem may be with the original device.
- Connect your device to a different input on the Sound Bar.

## Bluetooth can't be connected

- Check if the Sound Bar is connected with the third Bluetooth device.
- Be sure that there are no solid obstructions between the Sound Bar and source device. (within 30 feet)
- Reboot the Bluetooth and connect again.

## Hear echo when watching TV

- Setting your TV audio to External Speaker.
- Mute the TV speaker.

## Have other questions?

- Please contact with your retailer for assistance.

**littoak**

**Thanks for your reading!**

Welcome to any questions or suggestions~ Our after-sales service is always online

[service@littoak.com](mailto:service@littoak.com)