

BESTISAN

SR02

Bookshelf Speaker

User Manual

Important Safety Instructions

1. Read these Instructions.
2. Keep these Instructions.
3. Heed all Warnings.
4. Follow all instructions.
5. Do not use this apparatus near water.
6. Clean only with a dry cloth.
7. Do not block any ventilation openings. Install in accordance with the manufacturer's instructions.
8. Do not install near any heat sources such as radiators, heat registers, stoves, or other apparatus (including amplifiers) that produce heat.
9. Do not defeat the safety purpose of the polarized or grounding-type plug. A polarized plug has two blades with one wider than the other. A grounding type plug has two blades and a third grounding prong. The wide blade or the third prong is provided for your safety. When the provided plug does not fit into your outlet, consult an electrician for replacement of the obsolete outlet.
10. Protect the power cord from being walked on or pinched particularly at plugs, convenient receptacles, and the point where they exit from the apparatus.
11. Only use attachments/accessories specified by the manufacturer.
12. Use only with a cart, stand, tripod, bracket, or table specified by the manufacturer, or sold with the



apparatus. When a cart is used, use caution when moving the cart/apparatus combination to avoid injury from tip-over.

13. Unplug this apparatus during lightning storms or when unused for long periods of time.
14. Refer all servicing to qualified service personnel. Servicing is required when the apparatus has been damaged in any way, such as power-supply cord or plug is damaged, liquid has been spilled or objects have fallen into the apparatus, the apparatus has been exposed to rain or moisture, does not operate normally, or has been dropped.

Special note: When placing your unit on a lacquered or natural finish, protect your furniture with a cloth or other protective material.

FCC Warnings

WARNING: Changes or modifications to this unit not expressly approved by the party responsible for compliance could void the user's authority to operate the equipment.

NOTE: The equipment has been tested and found to comply with the limits for a Class B digital device, pursuant to Part 15 of the FCC Rules. These limits are designed to provide reasonable protection against harmful interference in a residential installation. This equipment generates, uses, and can radiate radio frequency energy and if not installed and used in

accordance with the instructions, may cause harmful interference to radio communications. However, there is no guarantee that interference will not occur in a particular installation. If this equipment does cause harmful interference to radio or television reception, which can be determined by turning the equipment off and on, the user is encouraged to try to correct the interference by one or more of the following measures:

- Reorient or relocate the receiving antenna.
- Increase the separation between the equipment and receiver.
- Connect the equipment into an outlet on a circuit different from that to which the receiver is connected.
- Consult the dealer or an experienced radio/TV technician for help.

Additional Warnings

he apparatus shall not be exposed to dripping or splashing and that no objects filled with liquids, such as vases, shall be placed on apparatus.

Battery shall not be exposed to excessive heat such as sunshine, fire or the light.

Caution marking is located at the rear or bottom of the apparatus.

he marking information is located at the rear or bottom of apparatus.



This symbol indicates that this product incorporates double insulation between hazardous main voltage and user accessible parts.

In The Box

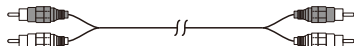
Box Contents:



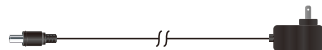
Speaker connecting cable (2.5M / 8.2ft)



3.5mm-RCA audio cable (1.5M / 5ft)



RCA to RCA audio cable (1.5M / 5ft)



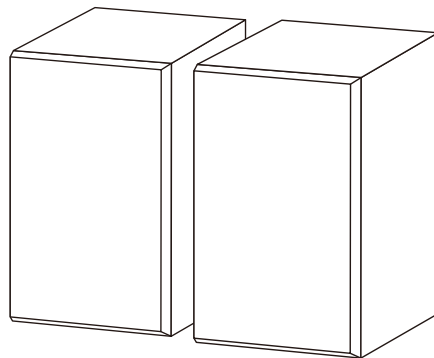
Power adapter



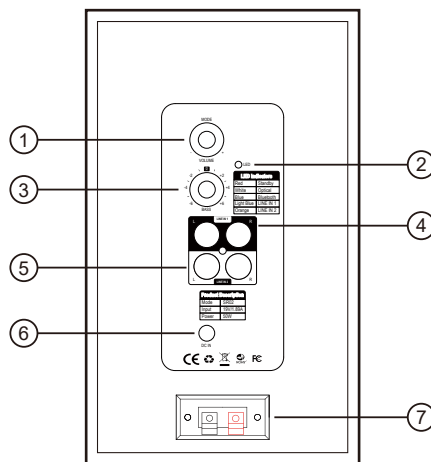
User manual

Passive speaker

Active speaker



Speaker Controls



1. Master volume control / input selection

Press in to navigate between audio sources:

Line in 1 -> Line in 2 -> Bluetooth

2. LED indicator

Light Blue: Line in 1

Orange: Line in 2

Blue: Bluetooth

Red: Standby

3. Bass dial

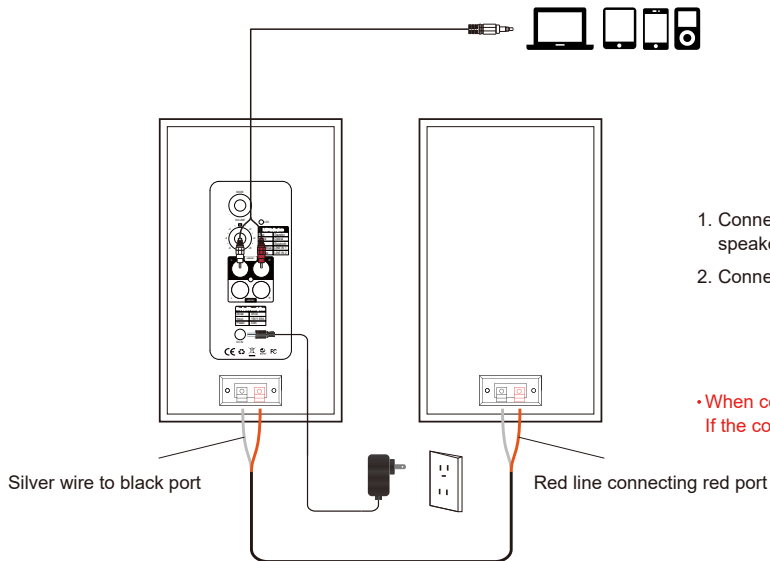
4. Line in 1 input port

5. Line in 2 input port

6. Power cord

7. Speaker output

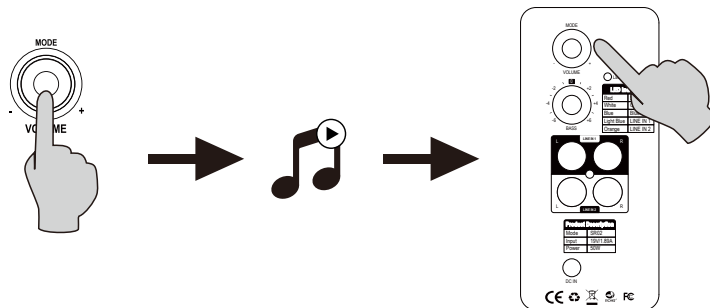
Connections



1. Connect the speakers with the included speaker connecting cable.
2. Connect to power source, then the indicator is light.

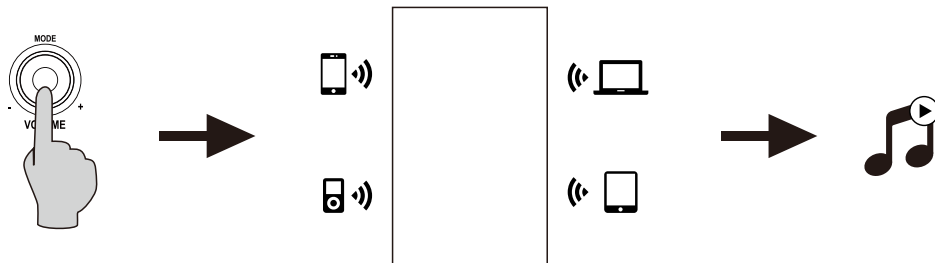
• When connecting the audio cable, one-to-one correspondence is required.
If the connection is reversed, the sound quality will be affected.

Line in Input



1. Press the master volume control on the active speaker to select LINE IN input.
The indicator turns to Light Blue(Line in 1) or Orange (Line in 2).
2. Using audio cable to connect audio source to the speaker.
3. Play from your device and adjust the volume accordingly.

Bluetooth Input



Pairing:

1. Turn on speaker and switch to Bluetooth mode by press the master volume control on back panel of the active speaker, The indicator turns to blue.
2. Go to setup section on your source devices (mobile phones, tablets, etc)and search for nearby Bluetooth devices, you will find "BESTISAN SR02" in the list.
3. Pair your device with "BESTISAN SR02".
4. Play audio tracks on your device and adjust the volume to a desired level.
5. Quick double-tap to disconnect Bluetooth.

Note:

1. Bluetooth connectivity and compatibility may be different among different source devices, depending on the software versions of source devices.
2. To enjoy the full Bluetooth functions of this product, please ensure your mobile device supports ADP and AVRCP profile.

Specifications

Power output:	L/R: 25W + 25W
Signal to noise ratio dB(A):	L/R: ≥ 95 dB (A)
Noise level:	≤ 25 dB (A)
Input sensitivity:	LINE IN1: R/L: 500 ± 50 mV LINE IN2: R/L: 700 ± 50 mV Bluetooth: R/L: 700 ± 50 mFFS
Frequency response:	40HZ-20KHZ
Bass unit:	4 inch (116mm)
Tweeter unit:	1.25 inch (32mm)

Troubleshooting

Problem	Solution
No sound	• Check if the power indicator light is ON.
	• Try to turn up the volume using either the master volume control.
	• Ensure the audio cables are firmly connected and the input is set correctly on the speakers.
	• Check if there is signal output from the audio source.
Cannot connect via Bluetooth	• Make sure the speaker is switched to Bluetooth input, in other audio input mode Bluetooth can not be paired or connected. Disconnect from any Bluetooth device by press and hold the volume dial in Bluetooth mode, then try again.
	• Effective Bluetooth transmission range is 10 meters, please make sure operation is within the range.
	• Try another Bluetooth device for connection.
The SR02 Bookshelf Speaker does not turn on	• Check if mains power is connected. or if the wall outlet is switched on.

If you want to find out more about BESTISAN, please contact ***service@bestisan.com***.

BESTISAN

Best Artisan & Better Than Most

Thanks for reading!

Best Artisan Corp.

801 DUPONT AVE SUITE F & G, ONTARIO, CA, 91761.

service@bestisan.com

Version 1.0